

Existing Land Use Town of Whitingham, Vt.

Notes:
- This map should be used for planning purposes and general reference only.
- A large scale color version of this map is available at the Whitingham Town Office.



Structures
Parcel boundary

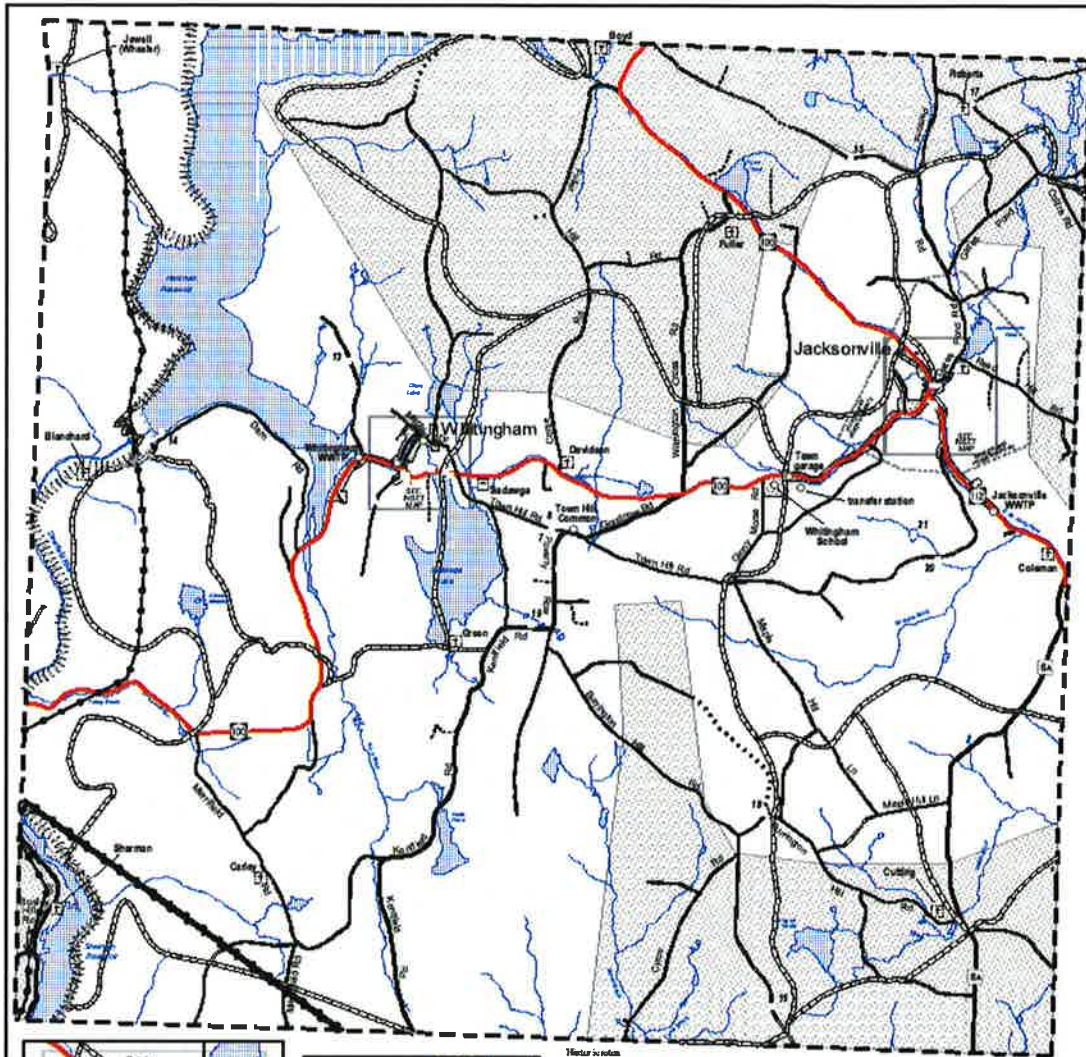
- State land
- Conservation easement - no public access
- Conservation easement - public access allowed
- Parcel enrolled in Use Value Appraisal program - 2007

- Forest
- Industrial
- Open
- Residential
- Village
- Water
- Public/Government



Sources:

- Land use/land cover areas were delineated by WRC GIS staff using 2001 Vermont digital orthophotos (taken in Spring 2000) and ESRI data.
- Information on parcels enrolled in the Use Value Appraisal Program for 2001 was obtained from the Whitingham listers.
- Building locations were captured using Global Positioning System technology by microATA, St. Johnsbury, VT for Vermont's Enhanced 9-1-1 program. Location errors in these data have been corrected by WRC GIS staff using 1:5000 digital orthophotos.
- Parcel lines are from GIS data developed by Cartographic Technologies, Inc. (CTI) Brattleboro, Vt. Whitingham's tax maps, at 1:5000 scale, were scanned, vectorized, then updated in 2006 by CTI.
- Surface waters were digitized from 1974 1:5000 orthophotos by the University of Vermont's School of Natural Resources under contract with OGIS (VGIS data layer SW99m). The data have been attributed and have received limited editing by WRC.



Jacksonville inset map



Whitingham inset map

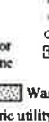
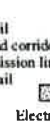
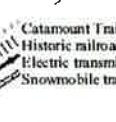
- Historic Sites**
- 1 Jacksonville Community Church
 - 2 Jacksonville Masonic Hall
 - 3 Jacksonville Colonial Store
 - 4 Keady's Store
 - 5 Redwings Lake House
 - 6 Sawyers Saw Mill
 - 7 Chandler House
 - 8 Cannon House/Arnold House
 - 9 Percy Dodge Blacksmith Shop
 - 10 Whitingham Community Church
 - 11 Green Mountain Hall
 - 12 Whitingham Colonial Store
 - 13 Deliverance Weaver House
 - 14 Clory Hall
 - 15 James Shephard House
 - 16 Anne Brown House
 - 17 Point Farm or Village
 - 18 E. Raymond Whitingham House
 - 19 Farmers' Union Store
 - 20 Harlow Mill
 - 21 Harlow Mill Pond
 - 22 Brigham Young Holyday
 - 23 No. 9 Schoolhouse

Sources:

- Historic sites on this map include those listed on the Vermont State Register of Historic Places, and those of local significance. Data on these sites were developed by Whitingham Regional Commission using 1:5000 orthophotos and 1911 data (VGIS data layer ISHTT).
- Community facilities and recreation sites were identified by the Whitingham Planning Commission. Locations were determined by WRC using 1:5000 base GIS data, 1:5000 orthophotos and 1911 data (VGIS data layer ISHTT).
- Electric transmission lines are taken from VGIS ELTRN data layer. They were digitized from 1:5000 orthophotos by Greenbome & O'Mara Inc. under contract with OGIS.
- Snowmobile trail locations are from the VGIS coverage TRAILS. Updated trails information was provided by the Town of Whitingham, delineated on a 1:20000 scale topographic map. These trails were uncorrected digitized by WRC. When visible, locations of several trails were developed from 1:5000 digital orthophotos.
- Data on the Catamount Trail was developed by WRC GIS staff using 1:5000 digital orthophotos.
- Cemetery data were provided by the Town of Whitingham and digitized from 1:5000 digital orthophotos by WRC.
- Electric utility service area boundary information was provided by Central Vermont Public Service Corp.

Community Facilities & Utilities

Town of Whitingham, Vt.



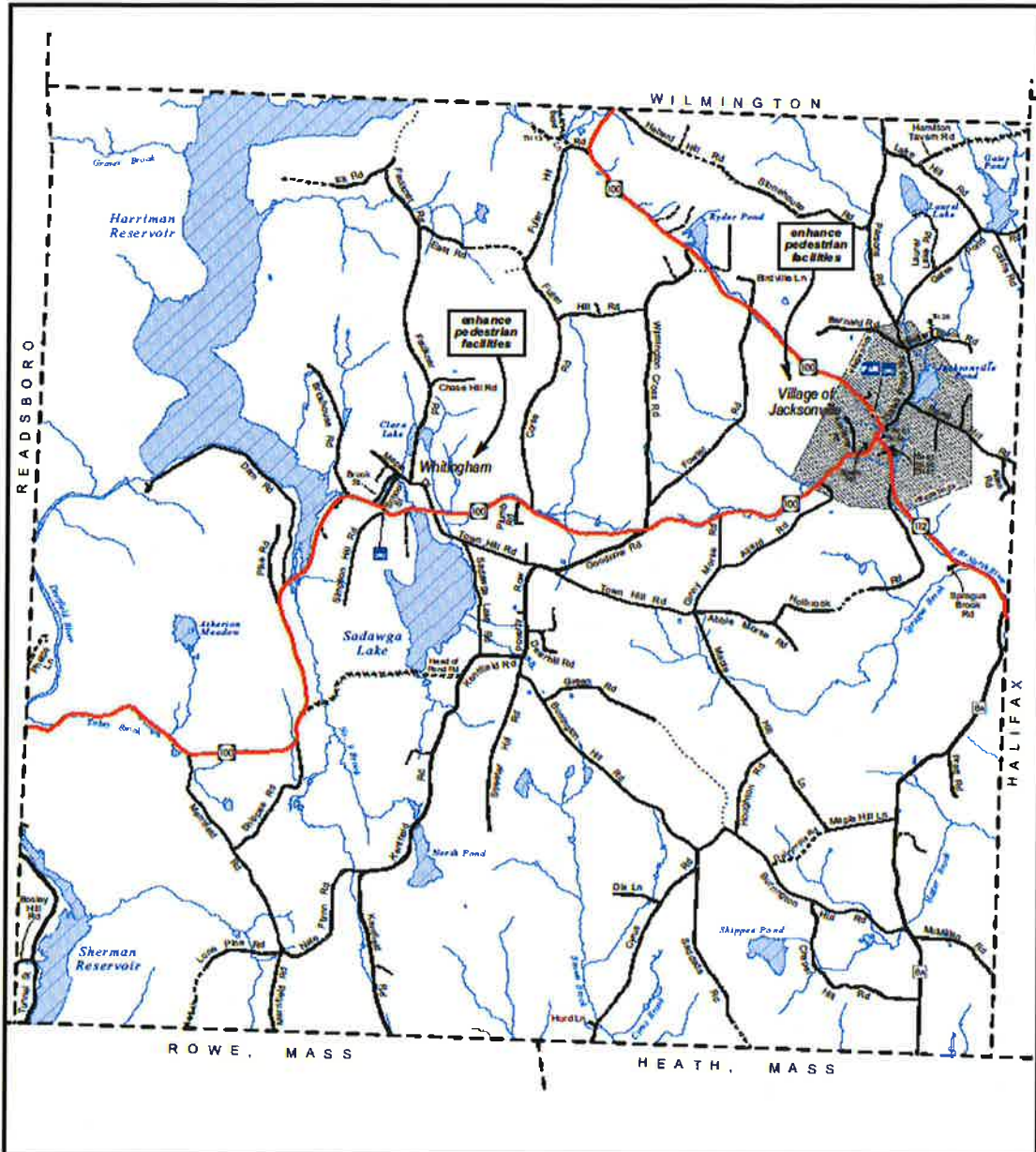
- * Historic site - on state register
- * Historic site - of local interest
- o Community facility
- ☒ Cemetery

- ▨ Wastewater treatment plant service area
- ▨ Electric utility service area
- ▨ Central Vermont Public Service
- ▨ Village of Jacksonville Electric Department



Notes:
 1. This map is for informational purposes and general reference only.
 2. A large scale color version of this map is available in the Whitingham Town Office.

Whitingham Town Plan - Adopted July 22, 2015



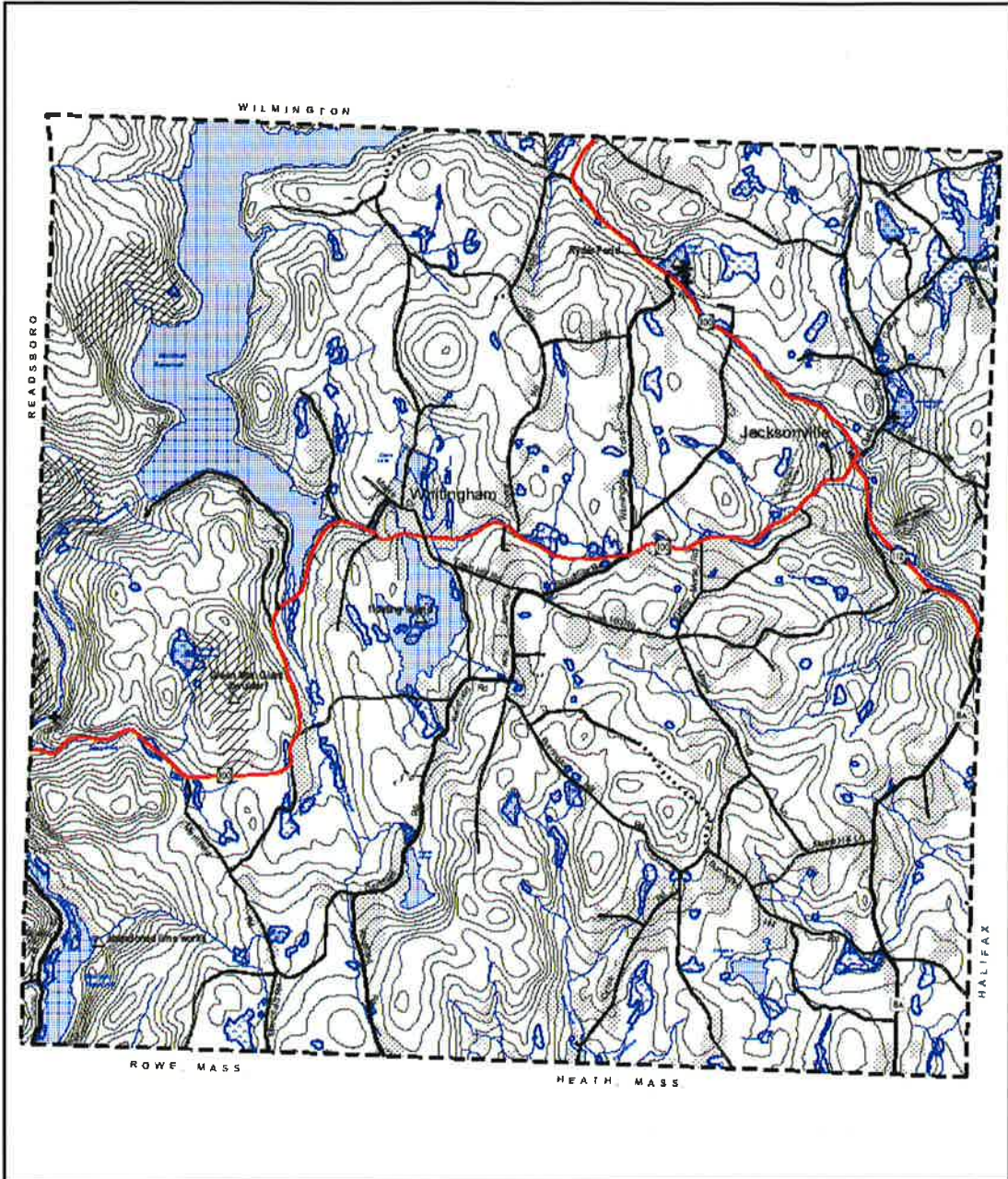
Transportation System
Town of Whitingham, Vt.
July 2009



- Federal or state highway
- Class 2 town highway - paved
- Class 3 town highway - paved
- Class 3 town highway - unpaved
- Class 4 town highway (unpaved)
- Legal Trail
- Private road/drive
- Impassable road (Class 4 Town Highways only)
- Bus Route - The MOOver (Greenfield Valley Transit Authority)
- Bus stop
- Municipal Park and Ride
- Stream
- River or pond

Data sources:
 - Highway data are from Vt. Agency of Transportation's (VTAG) data base (AVI) version 4.0. Data were compiled and updated by Windham Regional Council of Governments in 2008 using information provided by the Town of Whitingham, data from Vermont's Published 911 Dataset, and Vermont digital orthophotos.
 - Station names are from the Vermont Hydrography Data set (VHDS) data base (2008 version). This dataset was processed as a color 1:50,000 scale map and using aerial photography, topographic maps, color aerial photography and other secondary data sources.





Natural Resources

Town of Whitingham, Vt.

April 2009

Notes:

- The map is for informational use for planning purposes and general reference only.
- On-site aerial photos are used to verify the accuracy and content of the field data and data shown on the map.
- A large scale aerial version of this map is available in the Whitingham Town Office.

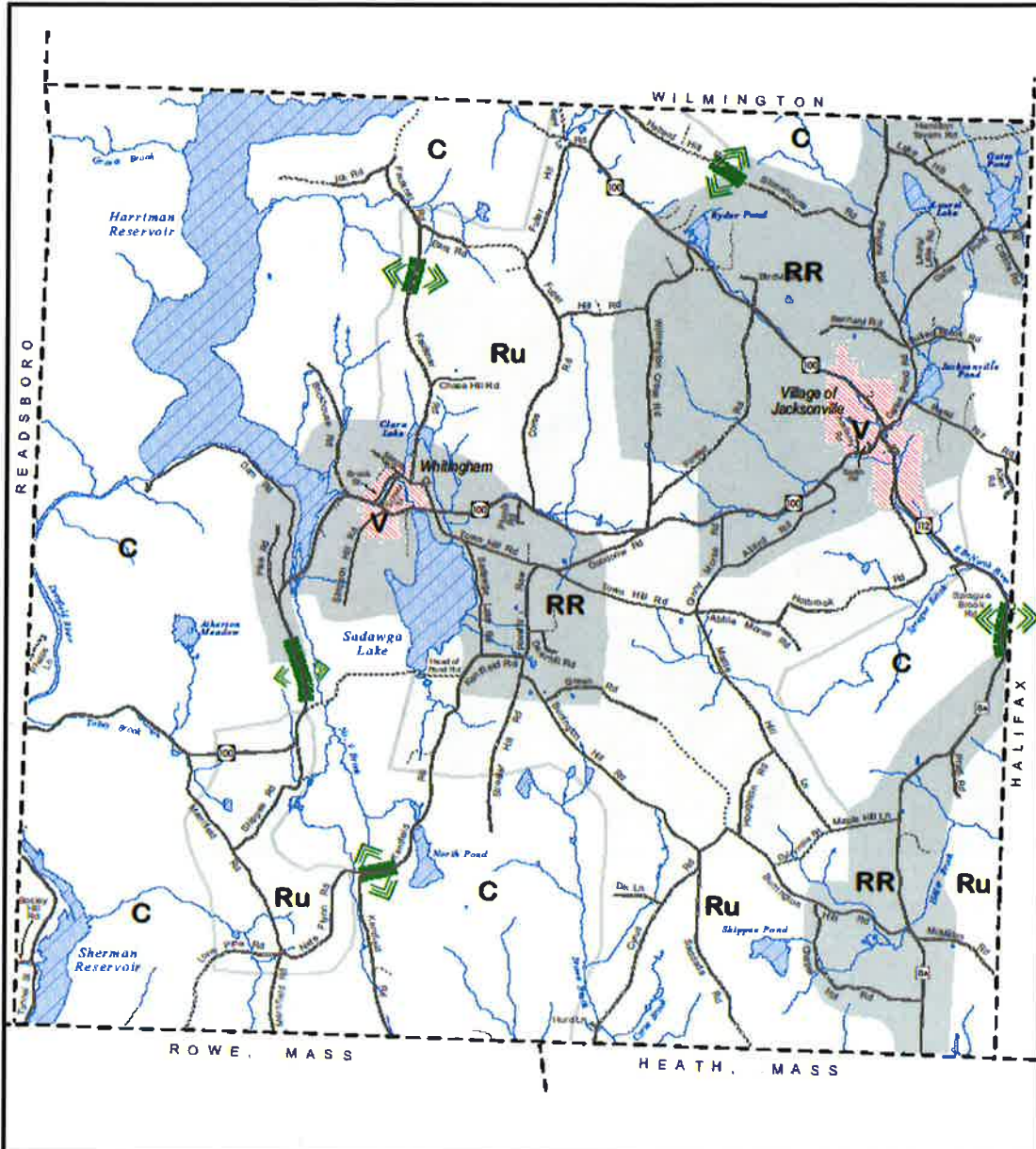
Scale: 1:40,000

- △ Site of natural or geologic interest
- ★ Significant Natural Community
- ◆ Rare or threatened plant species
- ◆ Deer wintering area
- Wetland
- Important farmland soil*
- 50' Contour, generalized
- Stream
- Pond

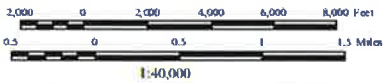
* these soils qualify as Primary Agricultural Soils under Act 250

Sources:

- Wetlands are from US Fish and Wildlife Service's National Wetlands Inventory (NWI) maps. These maps show approximate locations of wetlands that are generally 3 acres or larger in size.
- Agricultural soil delineations are derived using soil data. Soil boundaries were digitized from 1:20,000 topographic maps for the Washington County Soil Survey.
- Contour lines were generated from Vt. Mapping Program Digital Terrain Models by WRK using 3SURF Spatial Analyst. They are intended to portray the general topography of the area and should not be used to determine actual elevations.
- Locations of rare plant species were taken from Vt. ANR Department of Fish and Wildlife, Vermont and National Heritage Programs, Rare, Threatened and Endangered Species and Significant Natural Communities database. The data base is dated to February 1997. Locations are approximate, but generally within 200 meters. For further information, contact the Vermont and National Heritage Program.
- Deer wintering areas were delineated by Vt. ANR, Department of Fish and Wildlife. Digital data released as April 1997 were used.
- Sizes of natural or geologic areas were identified by Whitingham Planning Commission.
- Rare tree species were digitized from 1974 1:50,000 orthophotos by the University of Vermont's School of Natural Resources, under contract with ODES (VERIS data layer: SW500m). The data have been corrected and have no voids (based on data by WRK).



Proposed Land Use
Town of Whitingham, Vt.
 September 2009



- V** Village
- RR** Rural Residential
- Ru** Rural
- C** Conservation
- Critical corridor area
- Stream
- River or pond

Data sources:

- Proposed land use zones boundaries were developed by the Whitingham Planning Commission in 2009.
- Highway data taken from Vt. Agency of Transportation (VTAS) data by the SDPA team. Data were corrected and updated by Windham Regional Commission on 2/28/09. Subsequent provided by the Town of Whitingham, data from Vermont's Federal V11 Board, and Vermont digital orthophotos.
- Stream routes are from the National Hydrography Dataset (NHD) as layer 0200000001. The dataset is in geospatial data as of 1/1/02 and was developed using digital orthophotos, topographic maps, color aerial and aerial photography and other secondary data sources.

Whitingham Town Plan - Adopted July 22, 2015

